

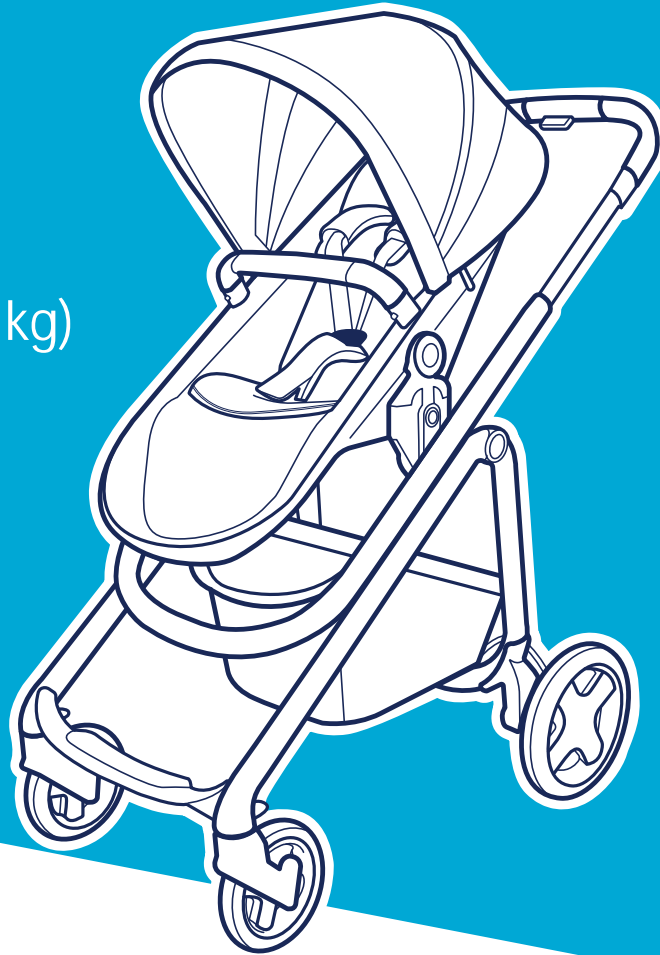


Tayla™

Stroller

Max 50 lb (22.67 kg)

Instructions
CV369, TR428



4358-7811 1.8.20



MAXI-COSI®
We carry the future

KEEP INSTRUCTIONS FOR FUTURE USE.
Read all instructions before using this stroller.


⚠ WARNING Failure to follow the steps and warnings on the labels and in the instruction manual can result in serious injury or death to your child.

Safety Information

WARNINGS

FOR THE SAFETY OF YOUR CHILD, PLEASE READ THE FOLLOWING WARNINGS AND ASSEMBLY INSTRUCTIONS AND KEEP FOR FUTURE REFERENCE.

- **Adult assembly required. CAUTION: Keep small parts away from children during assembly.**
- **NEVER LEAVE CHILD UNATTENDED. ALWAYS keep child in view when in stroller.**
- **AVOID SERIOUS INJURY from falling or sliding out. ALWAYS use the harness system. Check frequently to make sure it is secure.**
- **ALWAYS keep fingers away from moving parts, when folding, unfolding or adjusting stroller to prevent finger entrapment.**
- **ALWAYS make sure stroller is FULLY OPEN AND LOCKED before using.**
- **ALWAYS use the brakes when stroller is stopped.**
- **ALWAYS remove protective material and poly bags and dispose before assembly.**
- **NEVER put hot liquids in the cup holder.**
- **NEVER use stroller on stairs or escalators.**
- **NEVER rollerblade with stroller.**
- **NEVER allow children to play with or hang onto the stroller.**
- **NEVER allow children to climb into the stroller unassisted. Stroller may tip over and injure child.**

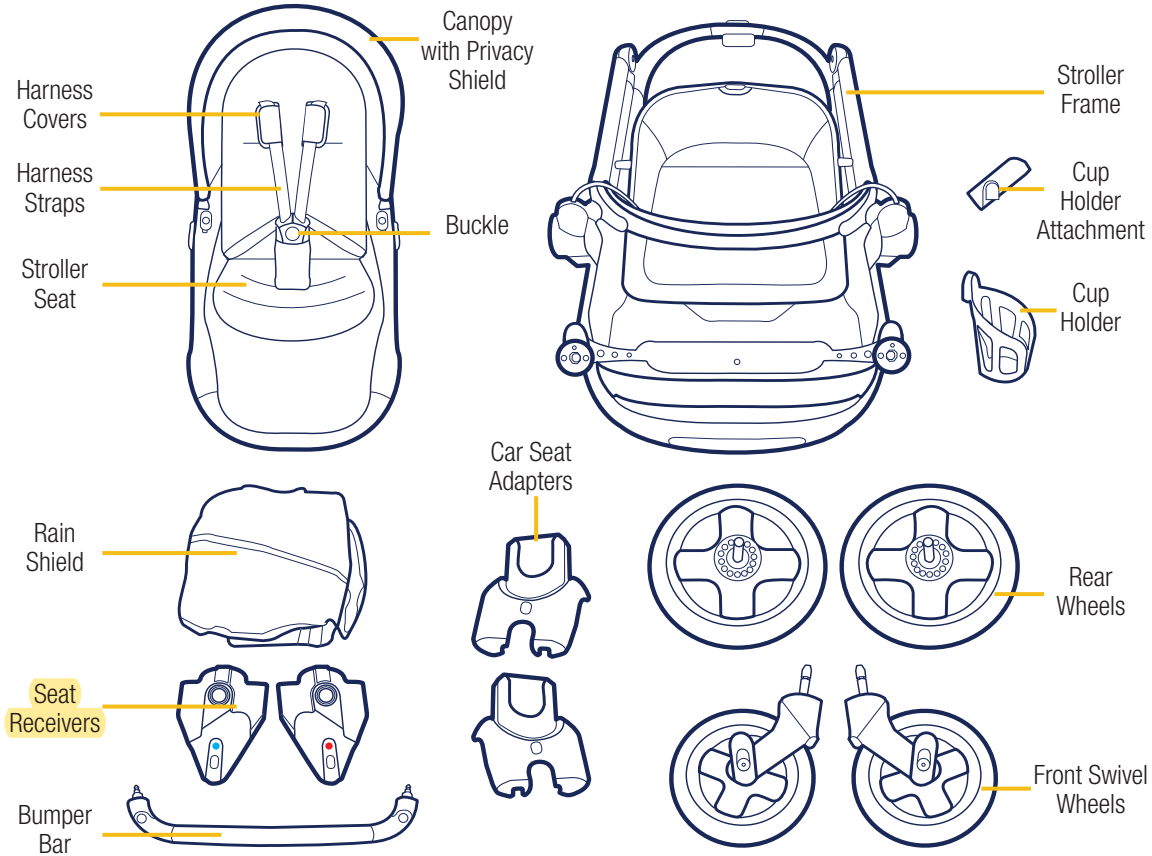
- 
- NEVER place or hang parcels, bags, or accessories on the handle or canopy. The stroller may tip over or the canopy may collapse.
 - This product will become unstable if a parcel bag or rack is used when there is no provision for one.
 - This product may become unstable if a parcel bag, other than the one recommended by the manufacturer is used.
 - This product will become unstable if the manufacturer's recommended load is exceeded.
 - Care must be taken when folding and unfolding the stroller to prevent finger entrapment.
 - DO NOT carry additional children, goods, or accessories in or on this product except as recommended in the manufacturer's instructions.
 - NEVER place more than 1 lb (.5 kg) in cup holder.
 - NEVER place more than 25 lb (11.3 kg) in the storage basket. If weight is exceeded, hazardous unstable conditions may exist.
 - STROLLER is only for use with children up to 50 lb (22.67 kg), and WHEN SEATED, the midpoint of your child's head is at or below the top of the stroller seat.
 - ONLY use this stroller with ONE child at a time.
 - STROLLER is for use with children who can sit up unassisted and is NOT recommended for newborns.

Contents

Parts of Stroller	1	Adjusting Canopy and Footrest.....	12
Installing Wheels	2	Privacy Shade and Storage Basket Use.....	13
Unfolding Stroller Frame	3	Adjusting Stroller Seat Harness Straps.....	14
Adjusting Handle	4	Securing Child in Stroller Seat.....	16
Using Parking Brake and Locking Swivel Wheels	5	Folding Stroller	17
Attaching Car Seat to Stroller Frame	6	Removing and Installing Stroller Seat Pad ..	18
Removing Car Seat from Stroller Frame.....	7	Accessories	21
Attaching Stroller Seat Forward-Facing.....	8	Wash and Care	22
Removing Stroller Seat from Stroller Frame	9	Dorel Juvenile Group Information	23
Attaching Stroller Seat Rear-Facing	10	Replacement Parts.....	23
Reclining Stroller Seat	11	Warranty	23

Parts of Stroller

1



Lay out and identify all of the parts.

Please contact Consumer Care via:

You will need to know the model number and manufacture date.

If any parts are missing, **do not return this product to the place of purchase.**

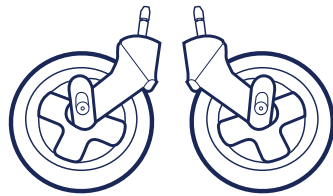
- Phone: 1-800-951-4113
- Text: 1-812-652-2525
- Chat: www.maxi-cosi.com

It is located on a label on the stroller frame.

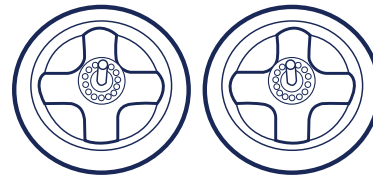


Installing Wheels

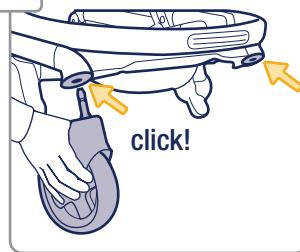
Front Swivel
Wheels



Rear Wheels

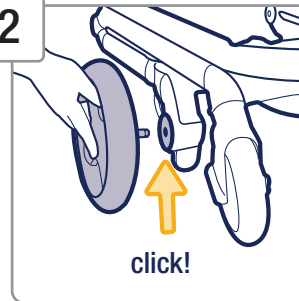


1

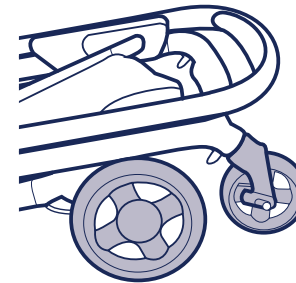


Attach the front
swivel wheels.

2



Attach the rear wheels.



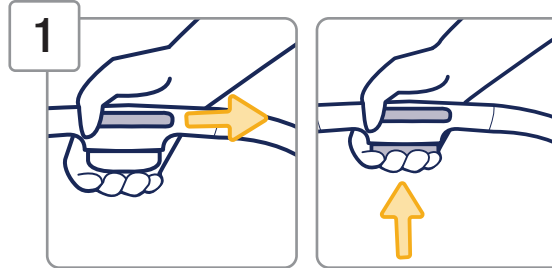
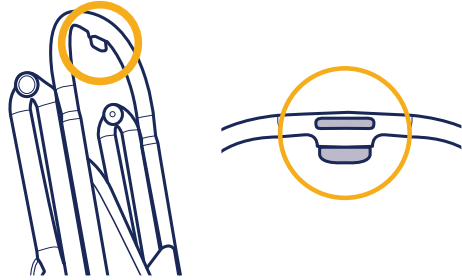
Finished!

Note: Pull out on the
wheels to make sure they
are secured.

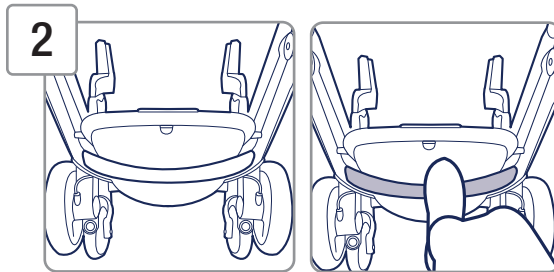
Unfolding Stroller Frame

3

Release Buttons



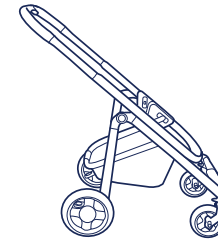
- Slide the stroller frame release button to either the left or right.
- Then squeeze the handle adjustment button.
- Hold them together.



Place your foot on the storage basket frame.



- Push your foot down to start unfolding.
- Then release the buttons.
- Continue to push down until the stroller locks into place.

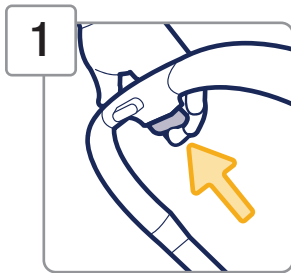
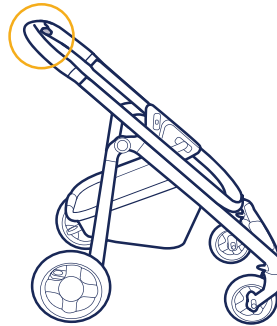


Finished!

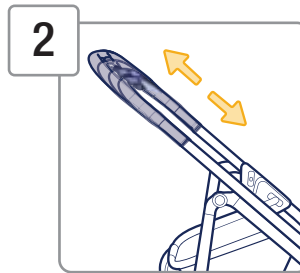
Adjusting Handle

This stroller's handle is adjustable and has 5 positions: 4 strolling heights and 1 storage. Adjust to a position that is comfortable for you.

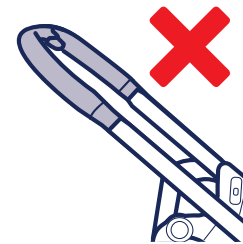
Handle Height Adjustment Button



1 Squeeze the handle adjustment button and hold it in.



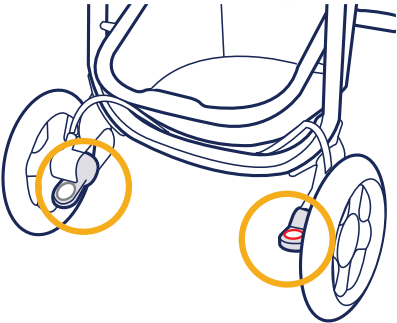
2 Lift or lower the handle to your desired position.



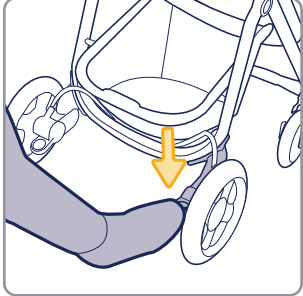
DO NOT use with the handle in the storage position. This is when the handle all the way down.

Using Parking Brake and Locking Swivel Wheels


5



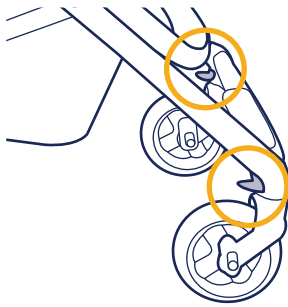
Rear Wheels



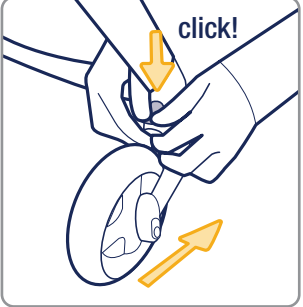
To Lock Parking Brake



To Release Parking Brake




Front Swivel Wheels



To Lock Swivel Wheels

click!



To Release Swivel Wheels

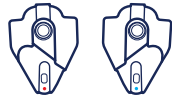
click!

- The wheels must face forward as shown.
- Firmly push the lock down tabs with both of your thumbs.
- Locked swivel wheels are best for traveling over rocky or uneven surfaces.

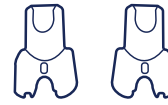
- Firmly pull the lock tabs up with both of your index fingers.
- Unlocked swivel wheels are best for everyday strolling.

Attaching Car Seat to Stroller Frame

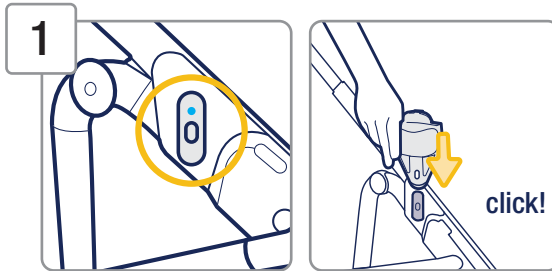
The car seat shown is a generic icon used for reference and may not look like your car seat.



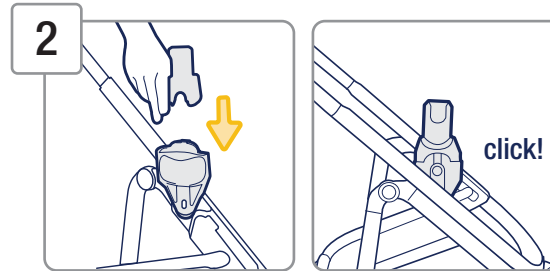
Seat Receivers



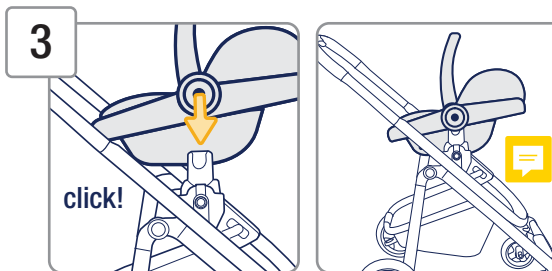
Car Seat Adapters



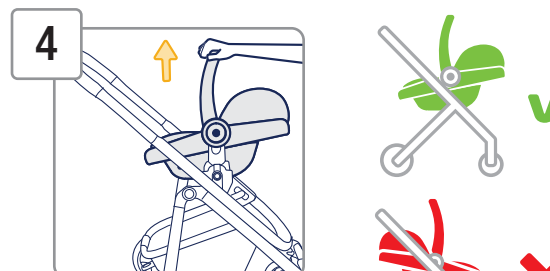
Attach the seat receivers with a blue dot to the stroller frame fixture with a blue dot. Then attach the receiver with a red dot to the fixture with a red dot.



Attach the car seat adapters to the seat receivers.



Attach the car seat to the car seat adapter. **ONLY** install the car seat rear-facing.



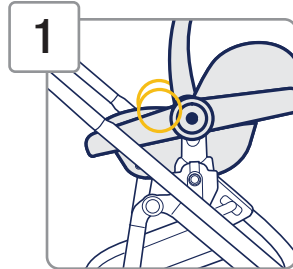
Pull up on the car seat either at the carry handle or handle hubs to check if it is securely installed.



Removing Car Seat from Stroller Frame

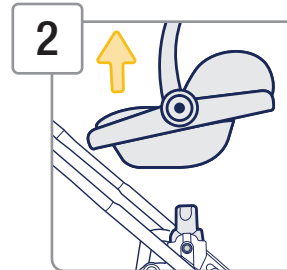
7

The car seat shown is a generic icon used for reference and may not look like your car seat.



1
Locate the stroller release buttons on the car seat and hold them in.

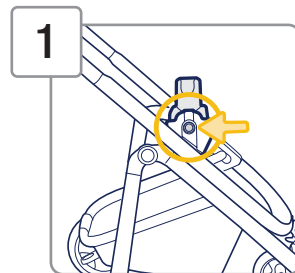
Please review your car seat's instruction manual to locate the stroller release buttons.



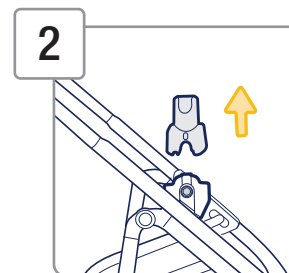
2
While holding the stroller release buttons in, lift the car seat off the stroller frame.

Removing Car Seat Adapters

You can fold and store the stroller frame with the adapters still attached. You **must** remove the adapters in order to use the stroller seat.



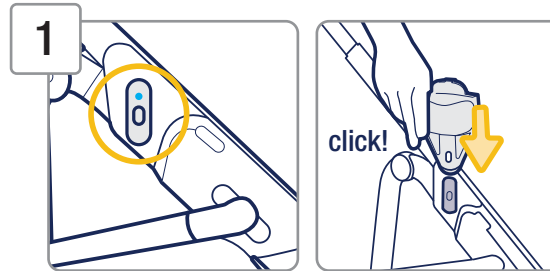
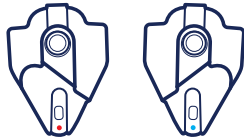
1
Press the release button on the **seat receiver**.



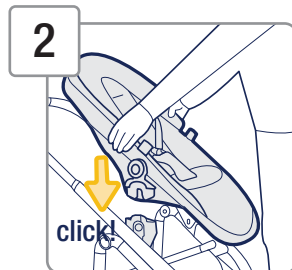
2
Remove the car seat adapter.

Attaching Stroller Seat Forward-Facing

Seat Receivers

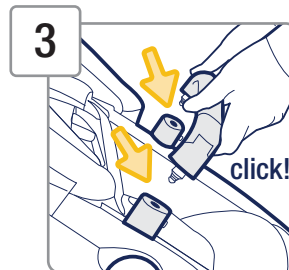


Attach the seat receivers with a blue dot to the stroller frame fixture with a blue dot. Then attach the receiver with a red dot to the fixture with a red dot.



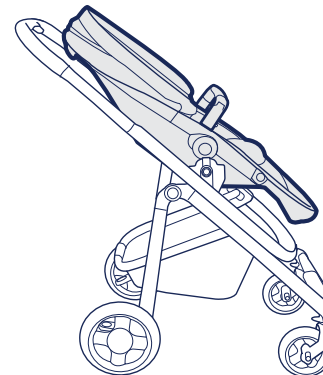
Attach the seat to the receivers.

NOTE: You **must** remove the car seat adapters if they are attached. See page 7.



Attach the bumper bar to the stroller seat.

NOTE: This is optional.

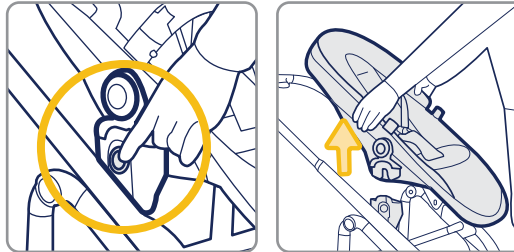


Finished!

Removing Stroller Seat from Stroller Frame

9

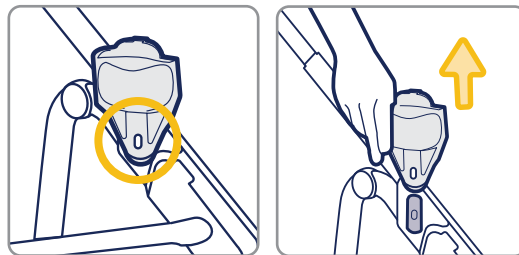
Removing Stroller Seat from Receivers



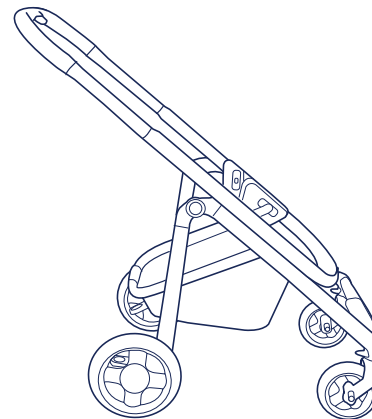
Press and hold in the release buttons and remove the stroller seat from the receivers.

Removing Seat Receivers from Stroller Frame

You can fold and store the stroller frame with the receivers still attached.

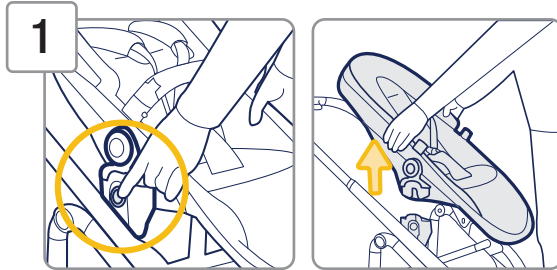


Press the release buttons and remove the receivers from the stroller frame.

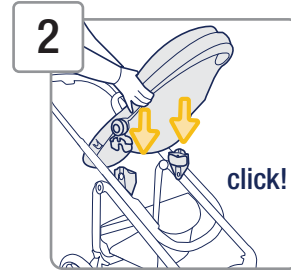


Finished!

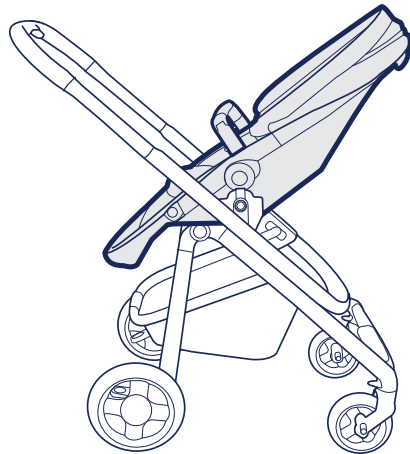
Attaching Stroller Seat Rear Facing



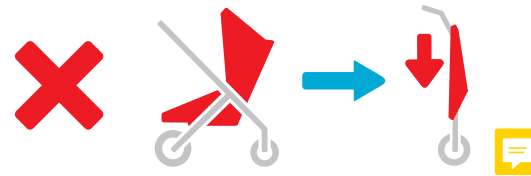
1 Press and hold in the release button on the seat receivers to remove the stroller seat.



2 Turn the stroller seat rear-facing and reattach it to the receivers.



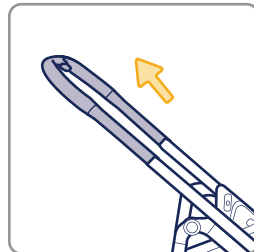
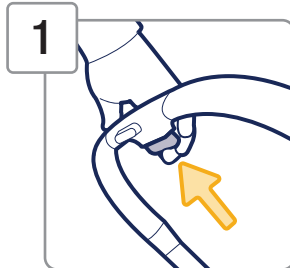
Finished!



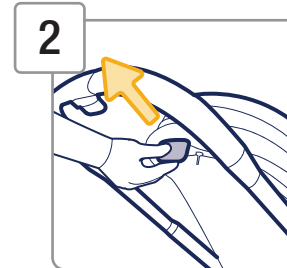
DO NOT fold the stroller when the stroller seat is rear-facing.

Reclining Stroller Seat

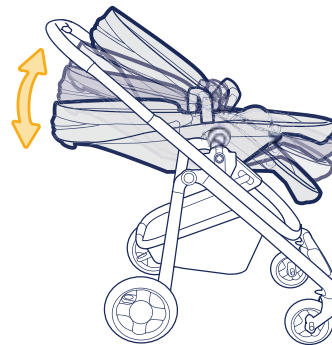
This stroller seat has multiple recline positions.
Adjust to a position that is comfortable for your child.



Extend the stroller handle to one of the 4 strolling heights that is comfortable for you.



Lift the recline lever to recline the stroller seat.



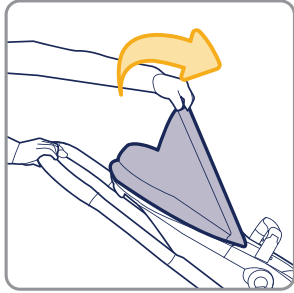
Forward-Facing



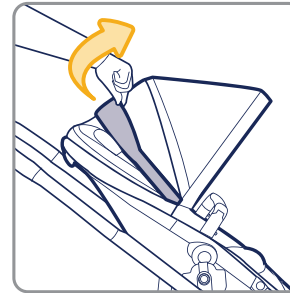
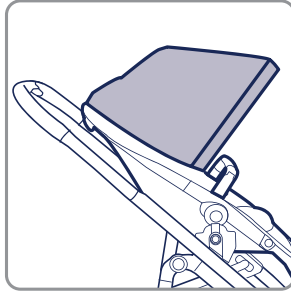
Rear-Facing

Adjusting Canopy and Footrest

Adjusting Canopy



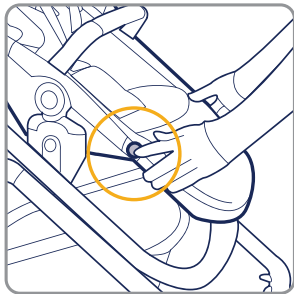
Pull the canopy forward.



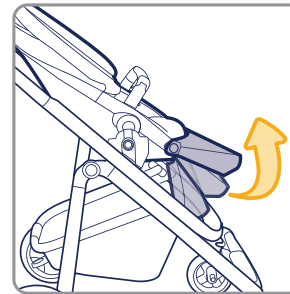
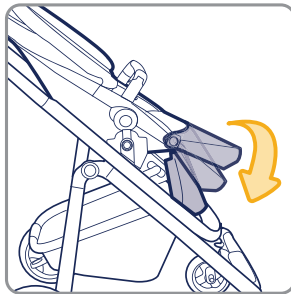
There is a Peek-a-Boo window.

Adjusting Footrest

The footrest does not lock into the **lowest position**.



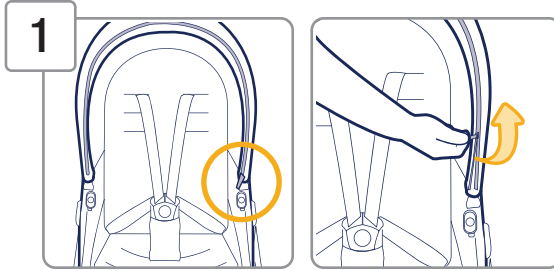
To lower footrest, press the footrest adjustment buttons and push down on the footrest.



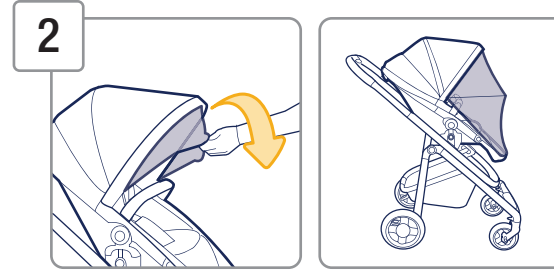
To raise footrest, pull the footrest up until it locks into place.

Privacy Shade and Storage Basket Use

13

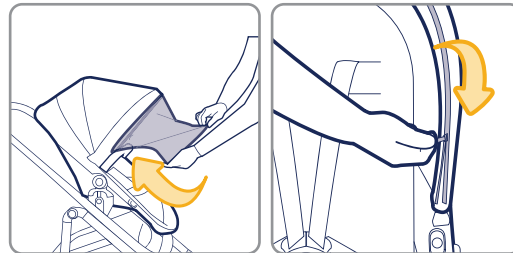


1
Unzip the storage pocket in the canopy and pull the privacy shade out.



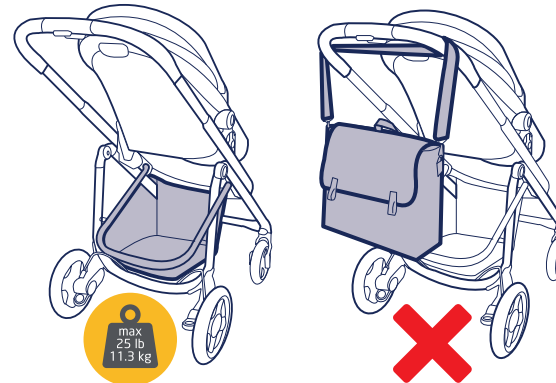
2
Pull the privacy shade down and tuck it around the front of the stroller seat footrest.

Storing Privacy Shade



Fold the privacy shade up and tuck into the storage pocket in the canopy. Zip the pocket.

Storage Basket



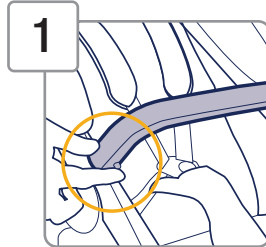
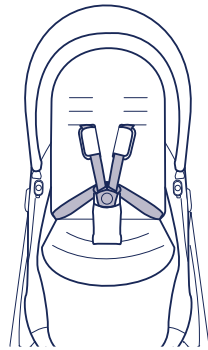
WARNINGS

- If weight is exceeded, hazardous unstable conditions may exist.
- NEVER place more than 25 lb (11.3 kg) in the storage basket.

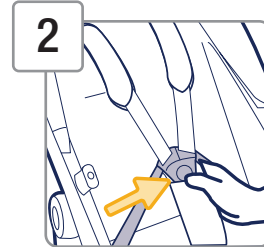
Adjusting Stroller Seat Harness Straps

As your child grows, you will need to adjust the harness strap height.

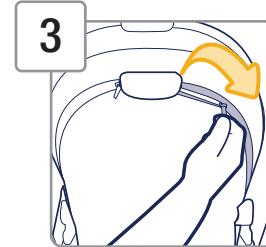
Harness System



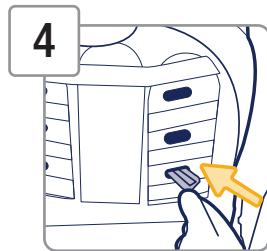
1 Press the buttons on both sides of the bumper bar to remove.



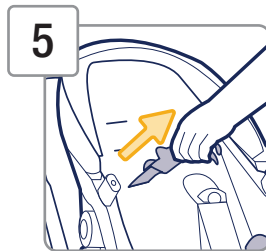
2 Unbuckle.



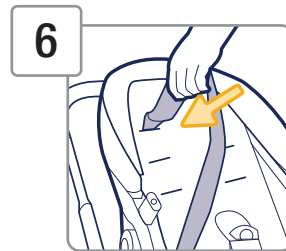
3 From the back of the seat, unzip the stroller seat's back panel.



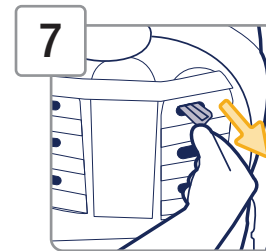
4 Push the harness covers' retainers through the harness slots.



5 Pull the harness cover out of the harness slot.

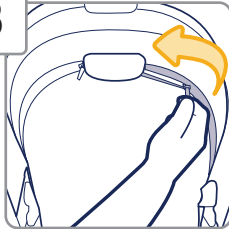


6 Push the harness covers' retainers into the harness slot closest to your child's shoulders.



7 Pull the harness covers' retainers through the harness slots.

8



Zip the back panel.

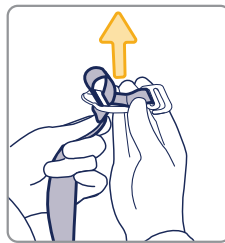
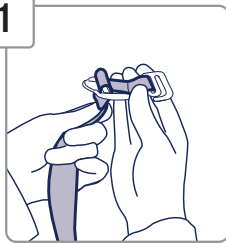
WARNINGS

For proper installation of the harness system, make sure the harness covers' retainers lay flat against the back board.
NEVER use stroller without the harness system.



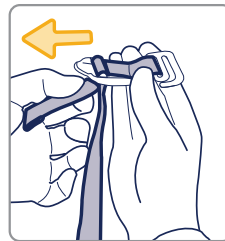
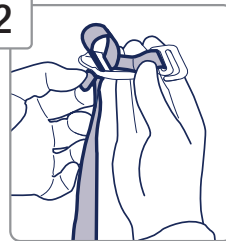
To Shorten Harness Strap

1



Hold the **long end** of the strap and then push it up.

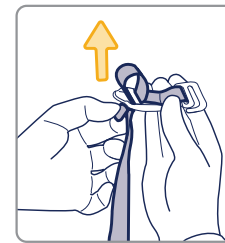
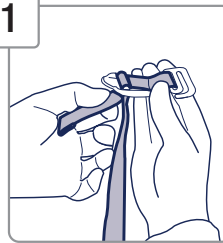
2



Hold the **short end** of the strap and then pull it out to tighten.

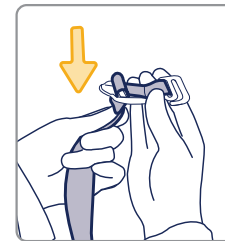
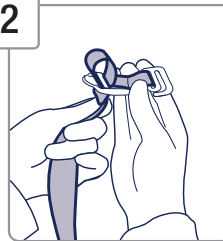
To Lengthen Harness Strap

1



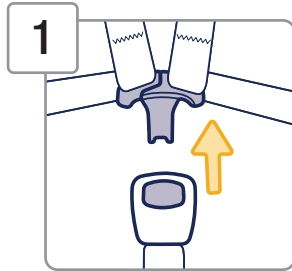
Hold the **short end** of the strap and then push it up.

2

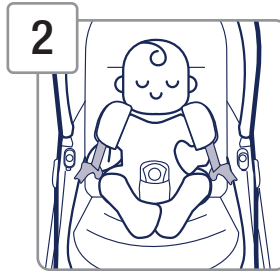


Hold the **long end** of the strap and then pull it down.

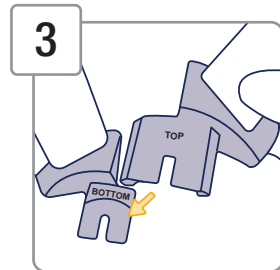
Securing Child in Stroller Seat



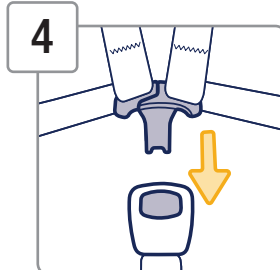
Unbuckle.



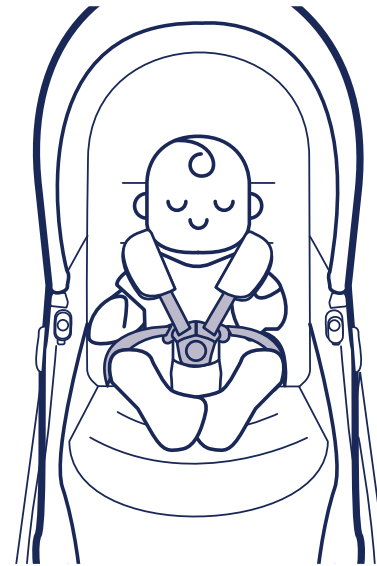
Place your child in the stroller seat.



Place the top buckle tongue on the bottom buckle tongue.
Hold them together.



Buckle.



Finished!

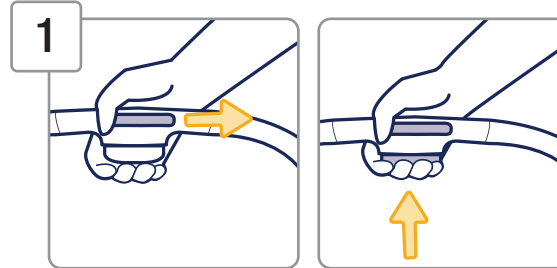
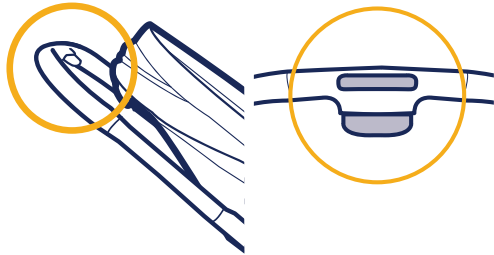
WARNINGS

- **NEVER LEAVE CHILD UNATTENDED.** Always keep child in view when in stroller.
- **AVOID SERIOUS INJURY** from falling or sliding out. Always use harness system. Check frequently to make sure it is secure.
- Failure to follow these instructions could result in serious injury or death of your child.
- **ONLY** for use with children up to 50 lb (22.67 kg), and **WHEN SEATED, the the midpoint of your child's head is at or below the top of the stroller seat.**
- **ONLY** use this stroller with **ONE** child at a time.
- **ONLY** use with children who can sit up unassisted and is **NOT** recommended for newborns.

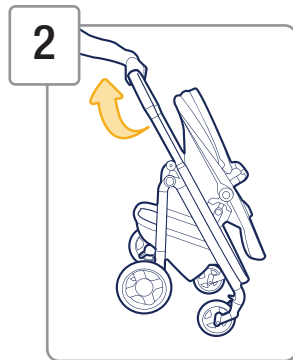
Folding Stroller

17

Release Buttons



- Slide the stroller frame release button to either the left or right.
- Then squeeze the handle adjustment button.
- Hold them together.

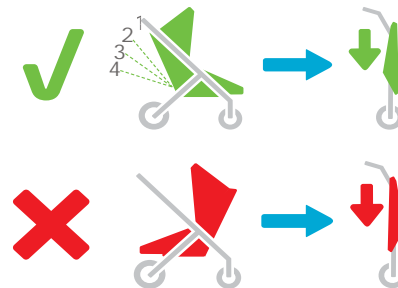


Lift the stroller up.



Finished!

NOTE: The stroller can self stand.



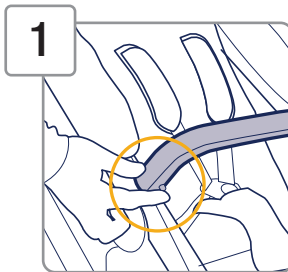
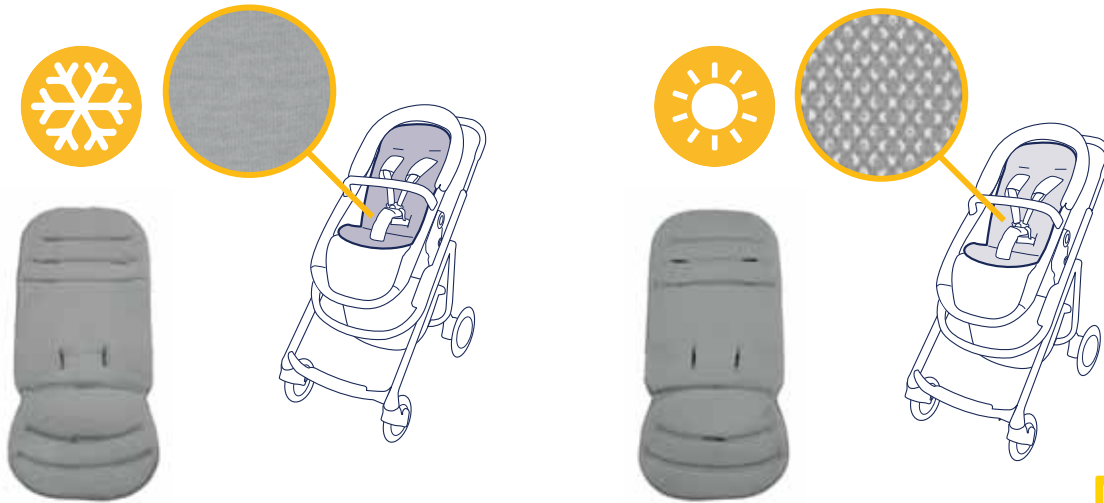
DO NOT fold the stroller when the stroller seat is rear-facing.



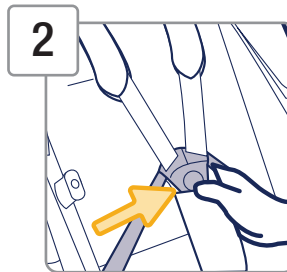
Removing and Installing Stroller Seat Pad

The stroller seat pad is reversible.

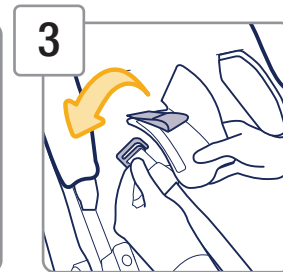
One side is for colder weather and the other for hotter weather.



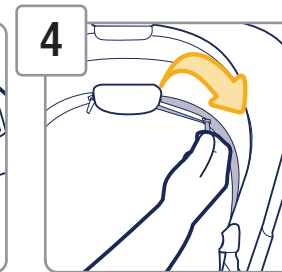
1
Press the buttons on both sides of the bumper bar to remove.



2
Unbuckle.

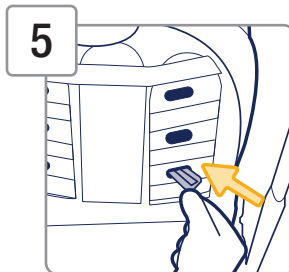


3
Undo the harness straps from the harness covers.

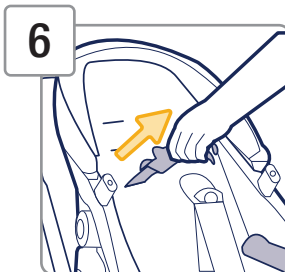


4
From the back of the seat, unzip the stroller seat's back panel.

continued on next page



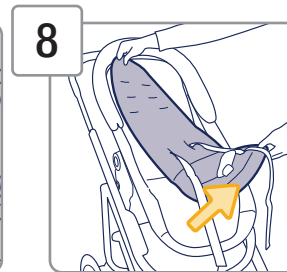
5 Push the harness covers' retainers through the harness slots.



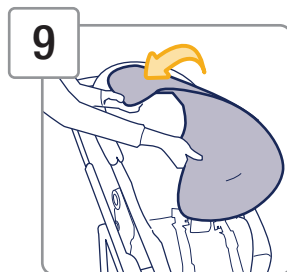
6 Pull the harness cover out of the harness slot.



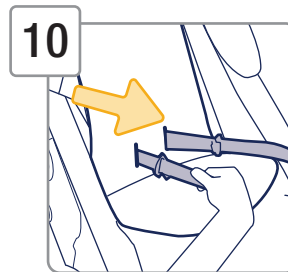
7 Undo the fastening strip on the harness straps.



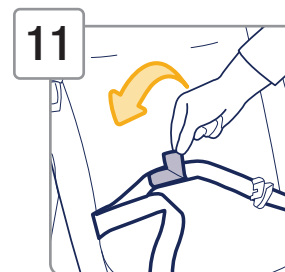
8 Pull the seat pad out of the stroller seat.



9 Flip the pad to the other side and place in the stroller seat.

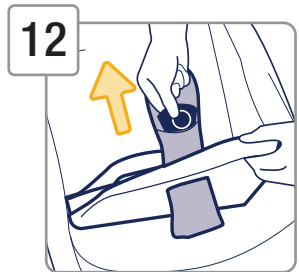


10 Thread the harness straps through the slots in the seat pad.

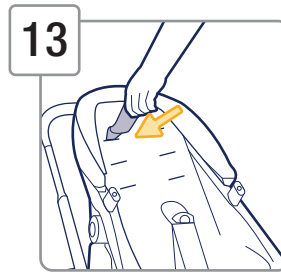


11 Attach the fastening strip on the harness straps.

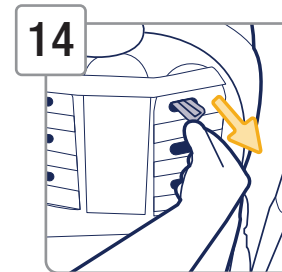
continued on next page



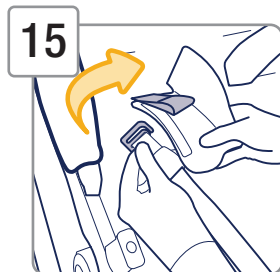
Pull the buckle through the slot in the seat pad.



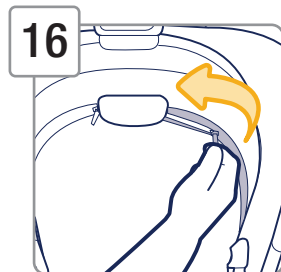
Push the harness covers' retainers into the harness slot closest to your child's shoulders.



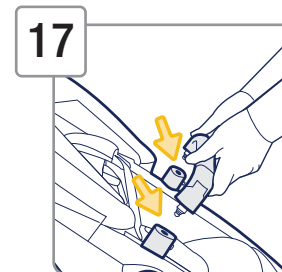
Pull the harness covers' retainers through the harness slots.



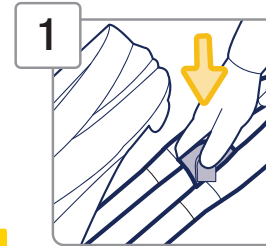
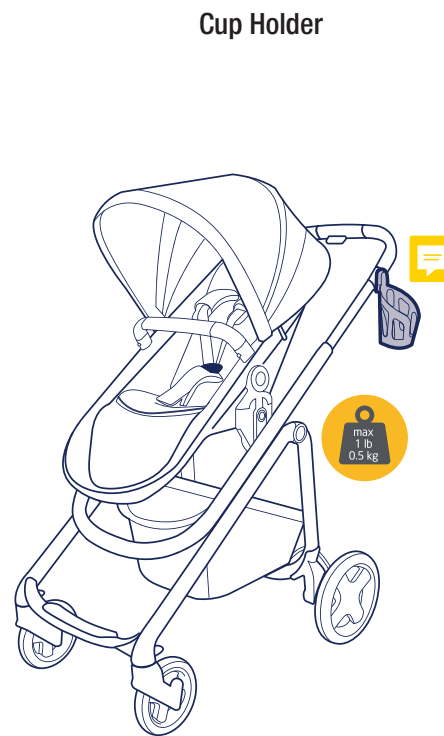
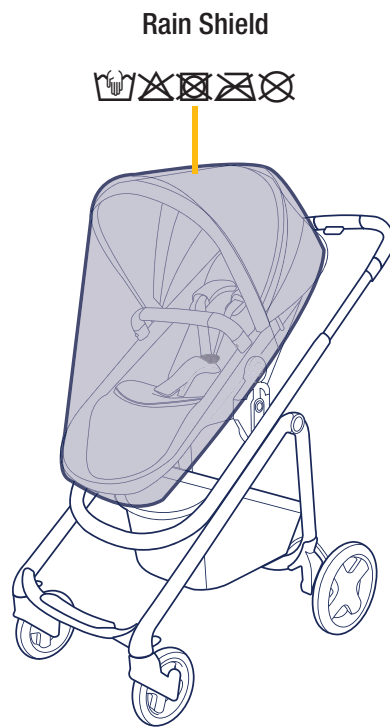
Attach the harness straps to the harness covers.



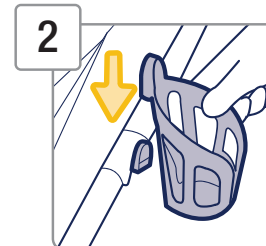
Zip the back panel.



Attach the bumper bar. This is optional.



Push the cup holder attachment on to the handle as shown.



Attach the cup holder to the attachment.

WARNINGS

- Never hang parcels or accessories from the cup holder as the stroller may tip over.
- Never place more than 1 lb (.5 kg) in cup holder.

Wash and Care

The diagram shows a stroller with yellow lines pointing to the canopy and seat, each accompanied by a spot cleaning icon. To the right is a separate view of the seat with a yellow line pointing to its top surface. Above this view is a row of care symbols: a '30' in a wash tub, a triangle with a slash, a square with an 'X', a square with a slash and a dot, and a circle with an 'X'. Below the seat view is a legend of care symbols with their corresponding text: Spot clean, Hand wash, Machine wash, gentle (30), Do not wash, Do not bleach, Do not tumble dry, Do not iron, and Do not dry clean.

30

Spot clean

Hand wash

Machine wash, gentle

Do not wash

Do not bleach

Do not tumble dry

Do not iron

Do not dry clean

Dorel Juvenile Group Information

23

Thank you for choosing this stroller. The DJG family is committed to creating strollers with the most comfort and convenience available today.

If you have questions or any concerns with this stroller, please contact our Consumer Care Department.

For parts availability and questions, please contact us via phone, text, or chat.

Include the model number and manufacture date (found on a sticker on the stroller frame) and a brief description of the part.

- Rear Wheels (2)
- Front Swivel Wheels (2)
- Harness Strap Covers (2)
- Cup Holder
- Bumper Bar
- Seat Pad
- Rain Shield

Two-Year Limited Warranty

Dorel Juvenile Group, Inc. warrants to the original purchaser that this product (Tayla Stroller), is free from material and workmanship defects when used under normal conditions for a period of two (2) years from the date of purchase. Should the product contain defects in material or workmanship Dorel Juvenile Group, Inc., will repair or replace the product, at our option, free of charge. Purchaser will be responsible for all costs associated with packaging and shipping the product to Dorel Juvenile Group Consumer Care Department at the address noted on the back of this document and all other freight or insurance costs associated with the return. Dorel Juvenile Group will bear the cost of shipping the repaired or replaced product to the purchaser. Product should be returned in its original package accompanied by a proof of purchase, either a sales receipt or other proof that the product is within the warranty period. This warranty is void if the owner repairs or modifies the product or the product has been damaged as a result of misuse. This warranty excludes any liability other than that expressly stated previously, including but not limited to, any incidental or consequential damages.

SOME STATES DO NOT ALLOW THE EXCLUSION OR LIMITATION OF INCIDENTAL OR CONSEQUENTIAL DAMAGES, SO THE ABOVE LIMITATION OR EXCLUSION MAY NOT APPLY TO YOU.

THIS WARRANTY GIVES YOU SPECIFIC LEGAL RIGHTS, AND YOU MAY ALSO HAVE OTHER RIGHTS THAT MAY VARY FROM STATE TO STATE.



Call: 1-800-951-4113



Text: 1-812-652-2525



Chat: www.maxi-cosi.com

Hours of Operation:

M-TH: 8:00 AM - 6:00 PM EST

FRI: 8:00 AM - 4:30 PM EST



**Date of
Manufacture Label**



Tayla™

Stroller

Max 50 lb (22.67 kg)



©2019 Dorel Juvenile Group, Inc. (800) 951-4113 www.maxi-cosi.com. Styles and colors may vary. Les styles et les couleurs peuvent varier. Made in CHINA. Fabriqué en CHINE. Distributed by (distribué par) Dorel Juvenile Group, Inc., 2525 State St., Columbus, IN 47201-7494. Dorel Juvenile Canada, 2855 Argenta Road, Unit 4, Mississauga, ON L5N 8G6. Importado y Distribuido en Chile por: Comercial e Industrial Silfa S.A. - San Ignacio 0201 / Parque Industrial Portezuelo Quilicura, Santiago Chile. Fono (562) 2339 9000. En Perú por: Comexa S.A. - Los Libertadores 455 - San Isidro, Lima - Perú. Fono (511) 4469014. En Centro América, Caribe y Ecuador por: Best Brands Group S.A. - Av. Balboa, Bay Mall Plaza, Planta Baja, local 9, Panamá. - Fono: (507) 300 2884. En Colombia por: Baby Universe S.A.S. - Vía 40 No. 77-29, Barranquilla, Colombia - Fono: (575) 353 1110 Importador: DJGM, S.A. DE C.V. Gabriel Mancera No. 1041 Col. Del Valle, Benito Juárez C.P. 03100 México, Ciudad de México R.F.C. DJG140305GN9 Tel. (55) 67199202 08/26/19 4358-7811



www.maxi-cosi.com

00000000